

KESMAC 2150 & 2200 MODEL SOD HARVESTERS

SERVICE KIT

For

AUTO-STEER TORSION SPRING KIT

KESMAC Inc
23324 Woodbine Avenue, Keswick Ontario Canada L4P 3E9
Tel (905) 476-6222 Fax (905) 476-6744 Web Site www.Kesmac.com
Info@kesmac.com

KESMAC 2150 & 2200 MODEL SOD HARVESTERS AUTO-STEER TORSION SPRING KIT

Some of the current auto-steer spring column torsion springs experience a failure with the welded nut breaking off the end of the spring.

The new design improves the service life of the Auto-Steer Spring Column Assembly

H510199 – Auto-Steer Torsion Spring Kit :

H111207	Torsion Spring	1
H111208	Upper Spring Socket	1
H111209	Lower Spring Socket	1
F940616	Spring Pin 3/8 Dia. X 1 3/4 Lg.	1

Before starting to install the kit :

- Carefully read and understand the following instructions.
- Check that all of the parts are accounted for and identified.
- Pressure wash the area to be worked on to remove all dirt and grease.



IMPORTANT

If in doubt, or lack understanding about these instructions, ask your supervisor or contact Kesmac Engineering Department for clarification.

Auto-Steer Torsion Spring Kit Installation Spring Column and Torsion Spring Removal

Fig.1

Lower the Auto-Steer Guide Shoe to the ground.
Switch the tractor engine 'OFF'.
Remove Clevis Pin attaching the Cable to the Top Lever Arm.
Remove the 3/8 Bolt, Lock-washer and Retainer Washer from the bottom of the Shaft.
Release the Clamp Bolt and remove the Support Pivot.
Remove three 1/2 x 1 1/4 Bolts attaching the Spring Column to the Mount and place it in a bench vise.

Remove the 3/8 x 3/4 Bolt, 'A', from the Column.
Loosen the Set Screws from the Bottom Bearing.
Place a block of wood on the end of the Shaft, at 'B', and knock the Shaft, Spring and Top Bearing out of the Column Tube.

Remove the Bolt 'C' and pull the Spring off the Shaft.

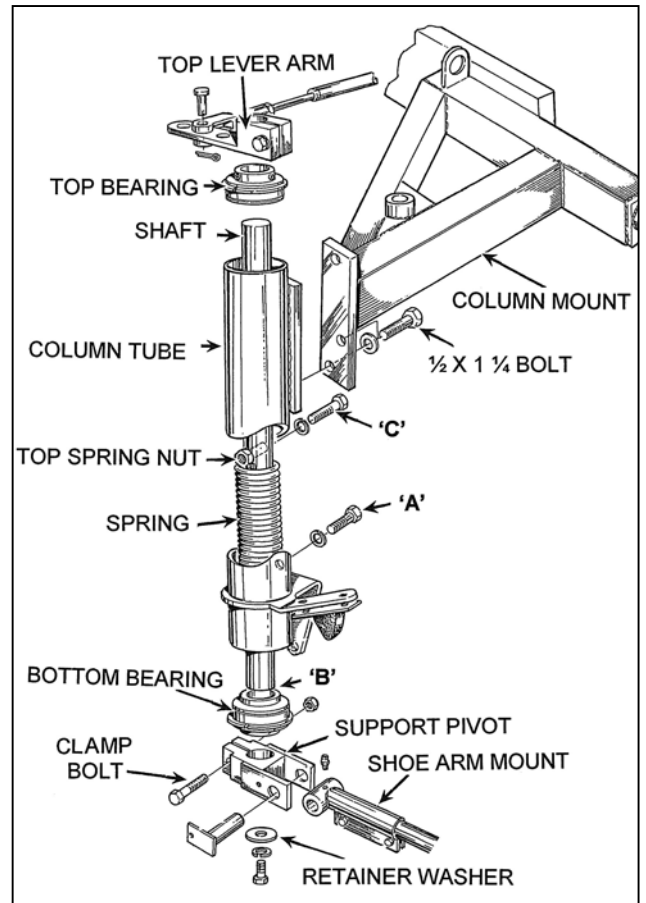


Fig.1

For the reassembly procedure see the following page.

Auto-Steer Torsion Spring Kit Installation
Spring Column and Torsion Spring Reassembly

Inspect the Shaft, Spring and Bearings, to ensure that they are in serviceable condition. Replace as necessary. Coat the Spring, Shaft, Upper and Lower Spring Sockets, and Bearings with grease before assembly.

Fig.2

- Install the Upper Spring Socket with Spring Pin (Small end toward spring as shown.)
- Slide the Spring, complete with Lower Spring Socket, onto the Shaft, inserting the Spring 'tang' into the Upper Spring Socket.

IMPORTANT

Install the Lower Spring Socket with the 'threaded' hole to the 'top'. It must align with the Hole 'A' in the Column Tube.

- Insert the Shaft/Spring Assembly into the Column Tube.
- Rotate the Shaft and Spring, until the 'threaded' hole in the Lower Spring Socket is aligned with Hole 'A' in the Tube.
- Insert the Locating Bolt through the Tube into the Lower Spring Socket, and tighten it.
- Fit the Bottom Bearing onto the Shaft and, with a suitable tool, carefully 'tap' it into the Tube. Tighten the Bearing Set Screws.

Fig.3

- Bolt the Column Assembly onto the Column Mount and refit the Top Lever Arm and Cable.
- Slide the Support Pivot and Shoe Arm onto the Shaft, do not fully tighten the Clamp Bolt at this point
- Fit Retainer Washer, Lock-washer and Retainer Bolt into the bottom of the Shaft.

NOTE

The Support Pivot Clamp Bolt is not tightened until the set-up procedure is carried out. See the Harvester Operator's Manual.

IMPORTANT

Before operating the Auto-Steer, after the repair or replacement of parts, refer to the Harvester Operator's Manual for the correct set-up procedure.

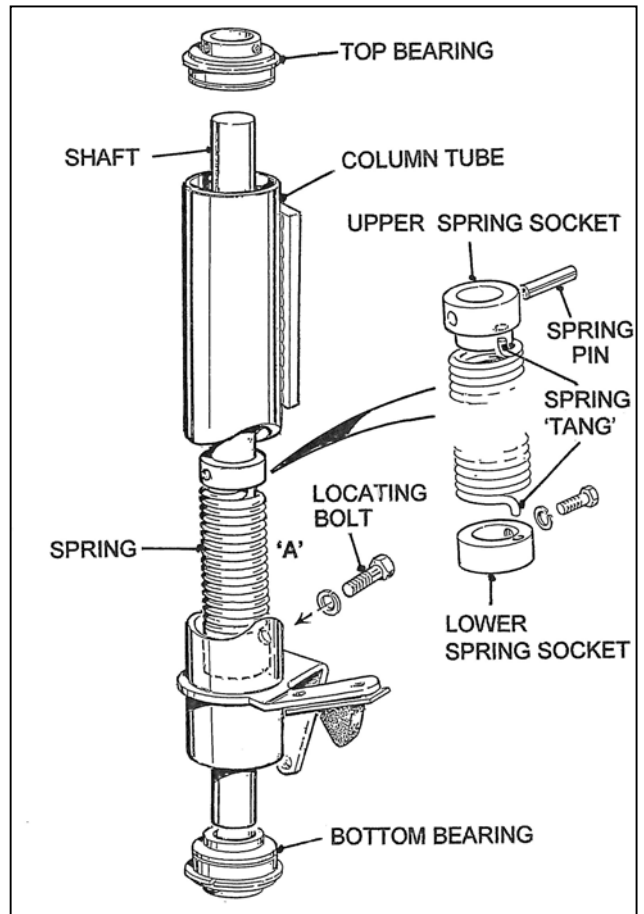


Fig.2

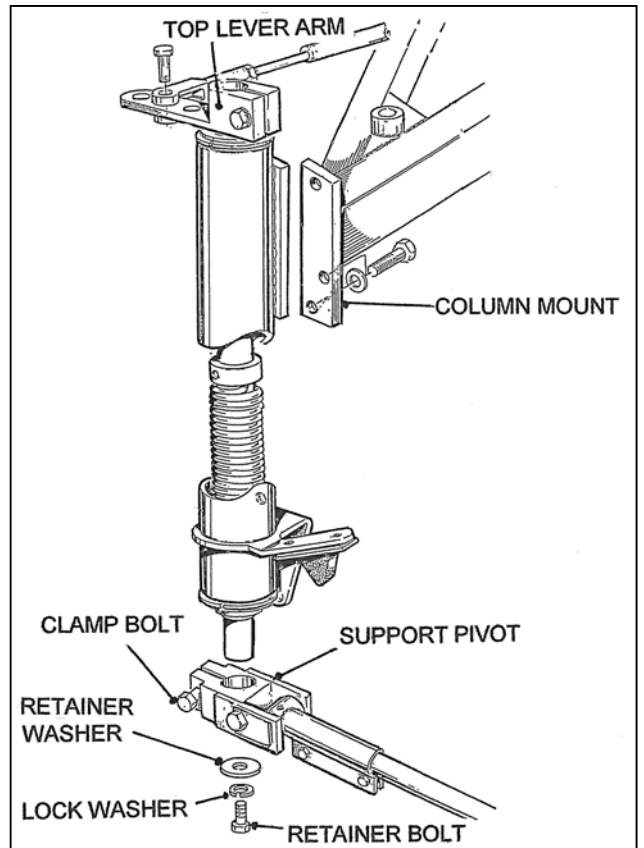


Fig.3